

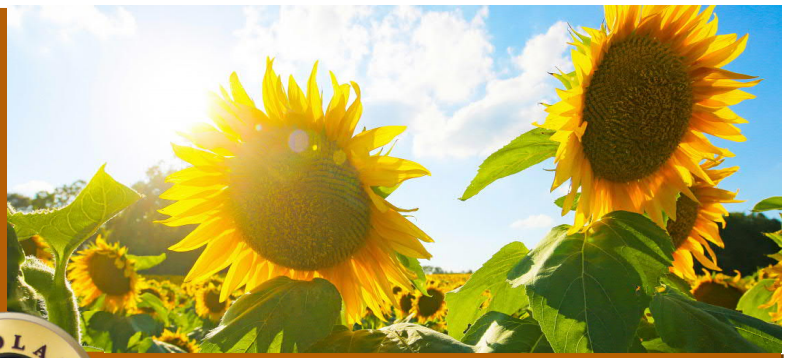
City of Goodland

PO Box 59 204 W. 11th St.

785-890-4500

www.cityofgoodland.org

Newsletter for September 2019

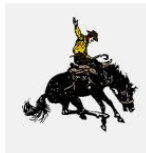


Kansas Begins Here!

****NOTICE****

City Offices will be
closed on September 2, 2019 in
observance of Labor Day

**LET'S
GET READY**



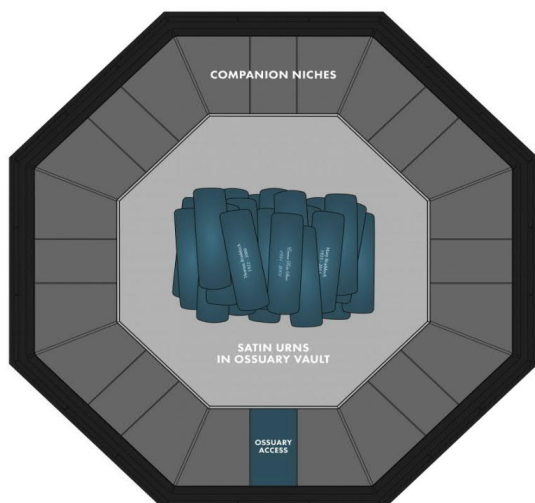
Goodland Homecoming - October 11th

Make plans to get out and support Goodland's Homecoming this year! The parade will begin at 2:00pm. If you would like to enter a float in the parade, contact Sarah Linton at 785-890-8726. Look for more details on Homecoming activities in the October newsletter.

A beautiful new addition was made to the Goodland Cemetery in August! Referred to as an "Ossuarium", it is a space to store cremains which combines a traditional columbarium with a shared ossuary vault in the center. As cremation becomes an increasingly popular funeral service, this new monument was purchased to ensure that the Goodland community has many options on how to handle such an important aspect of life. Interested parties are able to purchase a "niche" or a reservation in the ossuary vault. A niche is approximately 12"x12" and will hold a maximum of two 6"x10" vase-style urns or two 5.5"x5.5"x7" box-style urns. Niches are sold on a first-come, first-served basis as there are only 80 niches available. Niche prices are based upon the desired row and are all-inclusive prices: purchase of the niche space includes one opening and closing (inurnment) and the inscription on the niche front. Purchase of reservation in the ossuary vault includes one opening and closing and inscription on the memorial band. Niche prices are as follows:

- Top Row: \$1,500
- Second Row: \$1,400
- Third Row: \$1,300
- Fourth Row: \$1,200
- Ossuary Vault: \$400

PLEASE DO NOT TOUCH THE OSSUARIUM. We know we have many interested individuals since its installation, but we ask that you do not press on the niches or otherwise touch the Ossuarium.



2019 Flatlander Festival Schedule

FRIDAY SEPT. 27TH

5:00PM - CAR RACES (Sherman County Speedway at the North end of Main St.)
5:00pm NWKTC FLATLANDER SOFT BALL TOURNAMENT (15th & E. Eustis at the College)

SATURDAY SEPT. 28TH (MAIN STREET GOODLAND, KS)

8:00am - 4:00pm BRICK TOP CRUISERS CAR SHOW registration at 8am (13th & Main Central School)
9:00am - 2:00pm BIKES & BRICKS MOTORCYCLE SHOW (9th & Main VFW)
10:00am - 4:00pm STREET FESTIVAL (Vendors, Food & Games)
10:00am - 4:00pm KC Garden Tractor Pull (HWY 27 and Enterprise Rd. next to Herl Chevoret)
8:00am - 4:00pm BRICK TOP CRUISERS CAR SHOW
10:00am - 4:00pm GOODLAND ART COUNCIL ART WALK (12th and Main)
11:00am - 12:00pm SCRUFFY DOG CONTEST (12th and Main)
3:30pm - 5:00pm BIKES & BRICKS MOTORCYCLE SHOW - Games at BANKWEST Parking Lot (9th & Center)
5:00pm 5 SMOKING HOT GUYS BBQ COOK OFF Registration (Chambers Park 13th & Center)
5:00pm NWKTC FLATLANDER SOFT BALL TOURNAMENT (15th & E. Eustis at the College)
5:00pm CAR RACES (Sherman County Speedway North end of Main St.)
8:00pm MOTORCYCLE & CAR CLUB PARADE (Main Street)

SUNDAY SEPT. 29TH

8:00am - 11:00am BIKES & BRICKS MOTORCYCLE SHOW - Continuation (VFW 9th & Main)
8:00am - 11:00pm BRICK TOP CRUISERS SHOW - Continuation (Elks Lodge 15th & Arcade)
11:00am 5 SMOKING HOT GUYS BBQ COOK OFF JUDGING (Chambers Park 13th & Center)
11:00am - 3:00pm PICNIC IN THE PARK EVENT Live Music, Vendors, Free Community Pulled Pork BBQ Feed & Games (Chambers Park 13th & Center)
12:00pm - 2:00pm GOODLAND ARTS COUNCIL TALENT CONTEST (Chambers Park 13th & Center)

